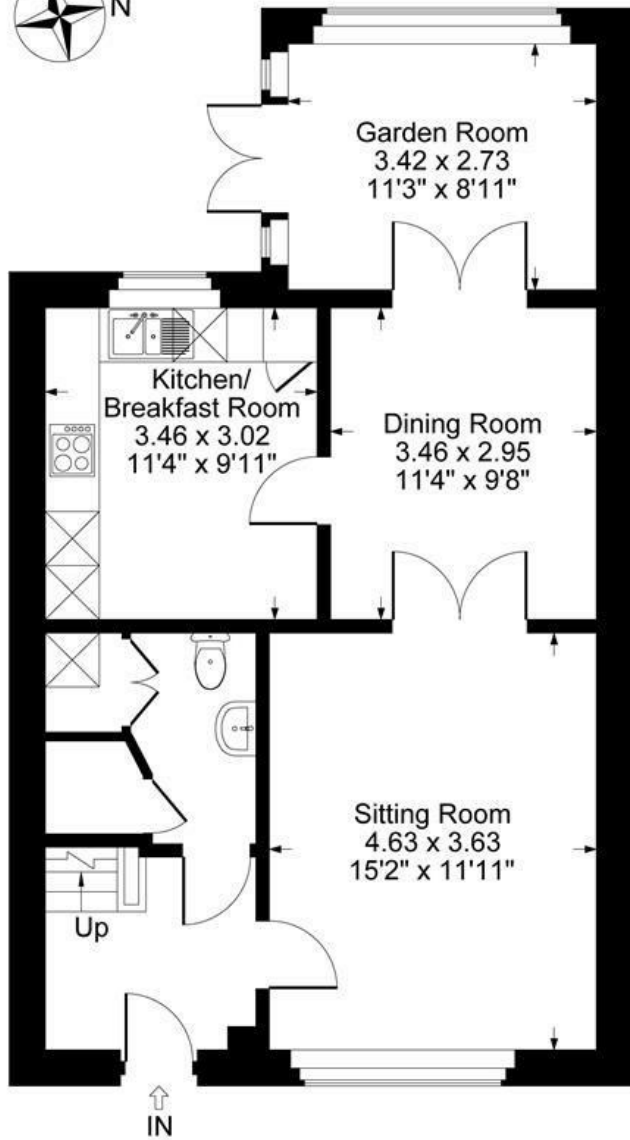


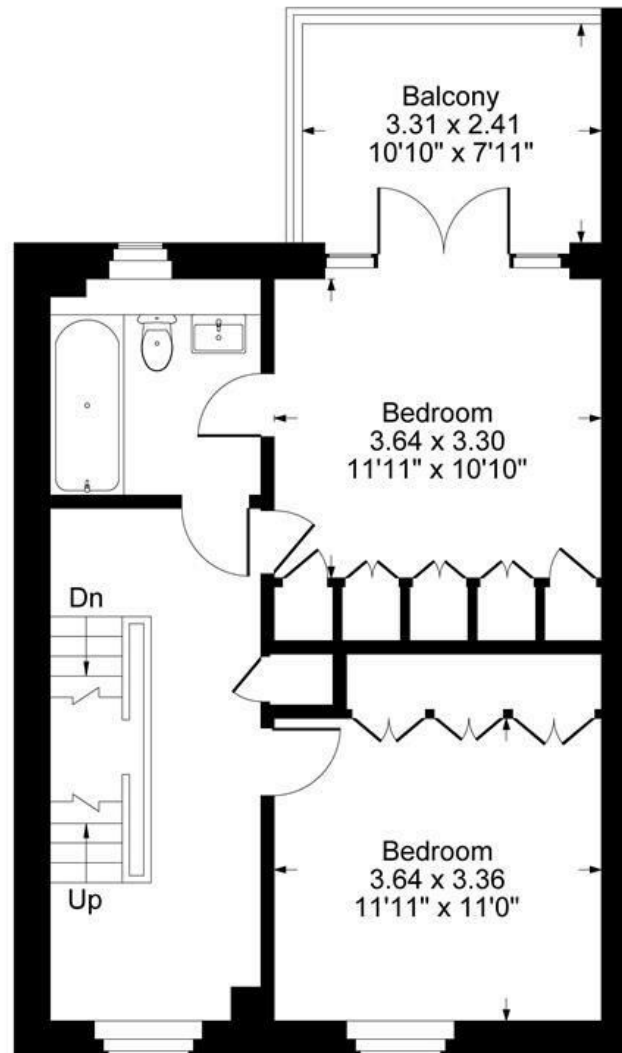


FAIRFAX
— & Co —
ESTATE AGENTS

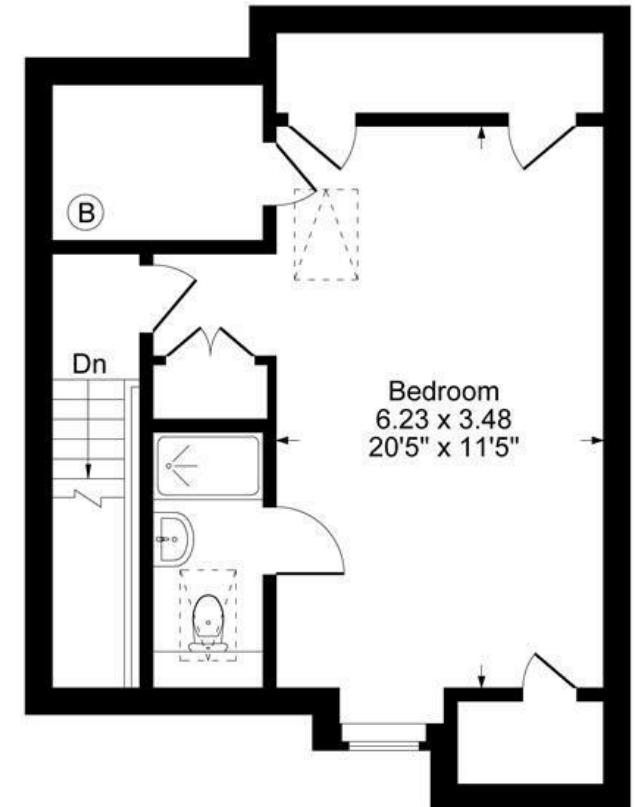
Penhurst Gardens, Chipping Norton



Ground Floor



First Floor



Second Floor

Approximate Gross Internal Area
Ground Floor = 60.44 sq m / 651 sq ft
First Floor = 50.42 sq m / 543 sq ft
Second Floor = 45.31 sq m / 488 sq ft
Total Area = 156.17 sq m / 1682 sq ft
Illustration for identification purposes only,
measurements are approximate, not to scale.

The Property

Set within an exclusive over-55s retirement community in the heart of Chipping Norton, this beautifully presented former show home offers spacious and elegant living, exceptional views, and thoughtful design throughout. A rare opportunity to acquire a property of this calibre in such a sought-after development, the home also benefits from two allocated parking spaces and is offered to the market chain free.

This impressive three-bedroom, two-bathroom home is ideally positioned overlooking attractive communal grounds, with a private garden and superb roof terrace enjoying far-reaching panoramic views.

The ground floor benefits from underfloor heating throughout and features a bright and generously proportioned sitting room, ideal for both relaxing and entertaining. The contemporary kitchen is fitted with quartz worktops and high-quality integrated appliances. There is a dedicated dining room, with double doors into a light garden room, and direct access to the garden.

On the first floor are two spacious double bedrooms, with the larger enjoying access to a stylish Jack and Jill bathroom. This level also provides access to the impressive roof terrace, offering an ideal space to enjoy the surrounding landscape.

The top floor is dedicated to the guest bedroom suite, complete with a private en-suite bathroom and built-in wardrobes.

This is a rare and spacious home within a highly regarded retirement setting, offering a strong sense of community, tranquillity, and convenience in equal measure.

Chipping Norton

Chipping Norton is a thriving historic market town on the edge of the Cotswolds, well placed between Oxford, Cheltenham and Stratford-upon-Avon. The town offers a wide range of shops, restaurants and amenities, including an excellent theatre, sports centre with indoor pool and lido, and a community hospital. Nearby Kingham provides rail links on the Paddington–Worcester line, along with regular bus services to Oxford. Leisure options include a local sports club, tennis courts, and nearby attractions such as Soho Farmhouse and Daylesford Organic Farm.







**1 Church Street
Charlbury
Oxfordshire
OX7 3PW
Telephone: 01608 811146**

**10 Market Place
Chipping Norton
Oxfordshire
OX7 5NA
Telephone: 01608 644808**